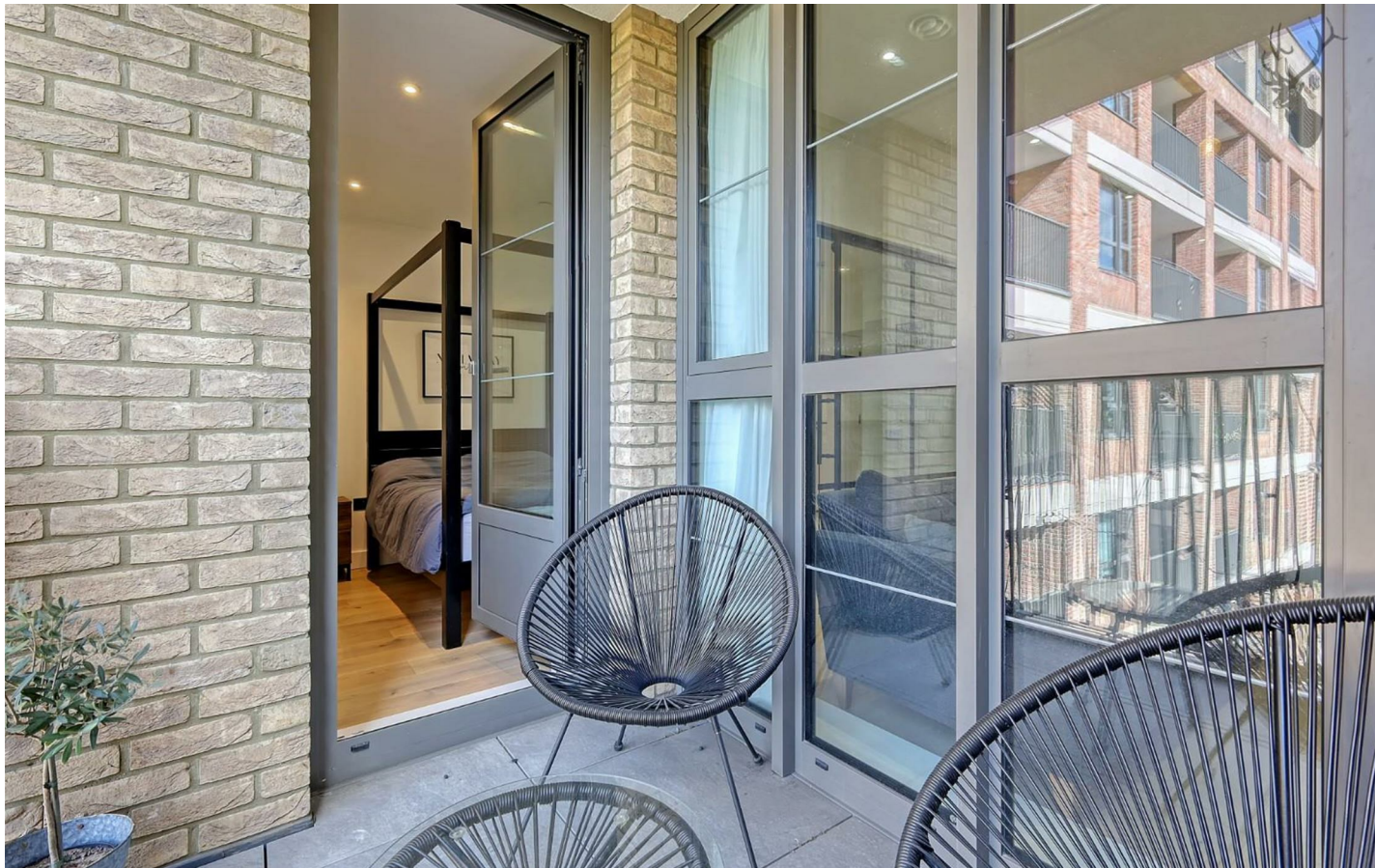




Morville Street, London, E3

BUTLER & STAG



Thoughtfully arranged studio apartment with a private balcony located in the heart of Bow.



- Beautifully Conceived Studio Apartment
- Excellent Transport Links
- Private Balcony
- Furnished
- Located in Trendy Bow
- Partitioned Bedroom and Living Space
- Immaculate Condition Throughout
- Immediately Available

Situated on the second floor of a secure modern development, this immaculately presented apartment features a cleverly partitioned bedroom and living/dining space, a smart fitted kitchen, gorgeous shower room and a south-facing private balcony.

The location is ultra-convenient, with Bow Road, Bow Church and Mile End stations all within easy reach. The ever-popular Victoria Park and amenities of the famed Roman Road are also just moments away.

Ideally suited to a single professional, the property is immediately available and offered furnished.

EPC Rating B
Council Tax Band C





Morville Street

Approx. Gross Internal 35.8 Area Sq M (385.5 Sq Ft)

BUTLER & STAG



Second Floor

Approx. 35.8 sq. metres (385.5 sq. feet)



Measurements are approximate and for illustration purposes only. While we do not doubt the accuracy and completeness, we advise you conduct a careful independent assessment of the property to determine monetary value.
© @modephoto.uk www.modephoto.co.uk

IMPORTANT NOTICE - These particulars have been prepared in good faith and they are not intended to constitute part of an offer or contract. We have not performed a structural survey on this property and the services, appliances and specific fittings have not been tested. All photographs, measurements, floor plans and distances referred to are given as a guide and should not be relied upon.

BUTLER & STAG

☎ 020 8102 1236

🏠 508 Roman Road, Bow, London, E3 5LU

✉ bow@butlerandstag.com

www.butlerandstag.uk